

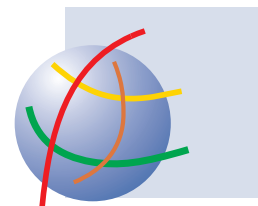
EINLADUNG ZUM

694. GEOGRAPHISCHEN KOLLOQUIUM

MONTAG, 08. JUNI 2009, 18 UHR c.t.
ALFRED-PHILIPPSON-HÖRSAAL
 DES GEOGRAPHISCHEN INSTITUTS
 MECKENHEIMER ALLEE 166, 53115 BONN

Fifth

International Lecture in Development Geography



**Professor Dr.
Neil ADGER,**

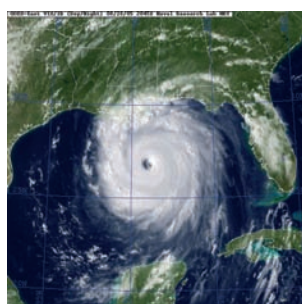
Tyndall Centre for Climate Change Research, University of East Anglia, Norwich UK

THE UNLIKELY TRANSFORMATION OF SOCIETIES IN RESPONSE TO CLIMATE CHANGE

Climate change is upon us. The scale of transformations of both the carbon economy and of social-ecological systems exposed to risk is becoming clear. The lecture focuses on how systems adapt to risk and argues that in adapting to climate change the structures of capitalism and the state's objectives of protection of territory directly influence the ability to adapt.

Neil Adger examines a range of response strategies and asks whether they enhance or erode resilience. Crucial examples from Brazil, Canada and U.K. are presented.

Neil Adger is Professor in the School of Environmental Sciences at the University of East Anglia, Norwich, UK. He has led the research program on adaptation in the Tyndall Centre for Climate Change Research, and he served as an author in reports of the Intergovernmental Panel of Climate Change (IPCC). Neil Adger is a member of the Resilience Alliance, a network of ecologists and social scientists dedicated to research on resilience for sustainable development.



Eintritt frei

Organisiert vom Arbeitsbereich Geographische Entwicklungsforschung
 am Geographischen Institut der Universität Bonn